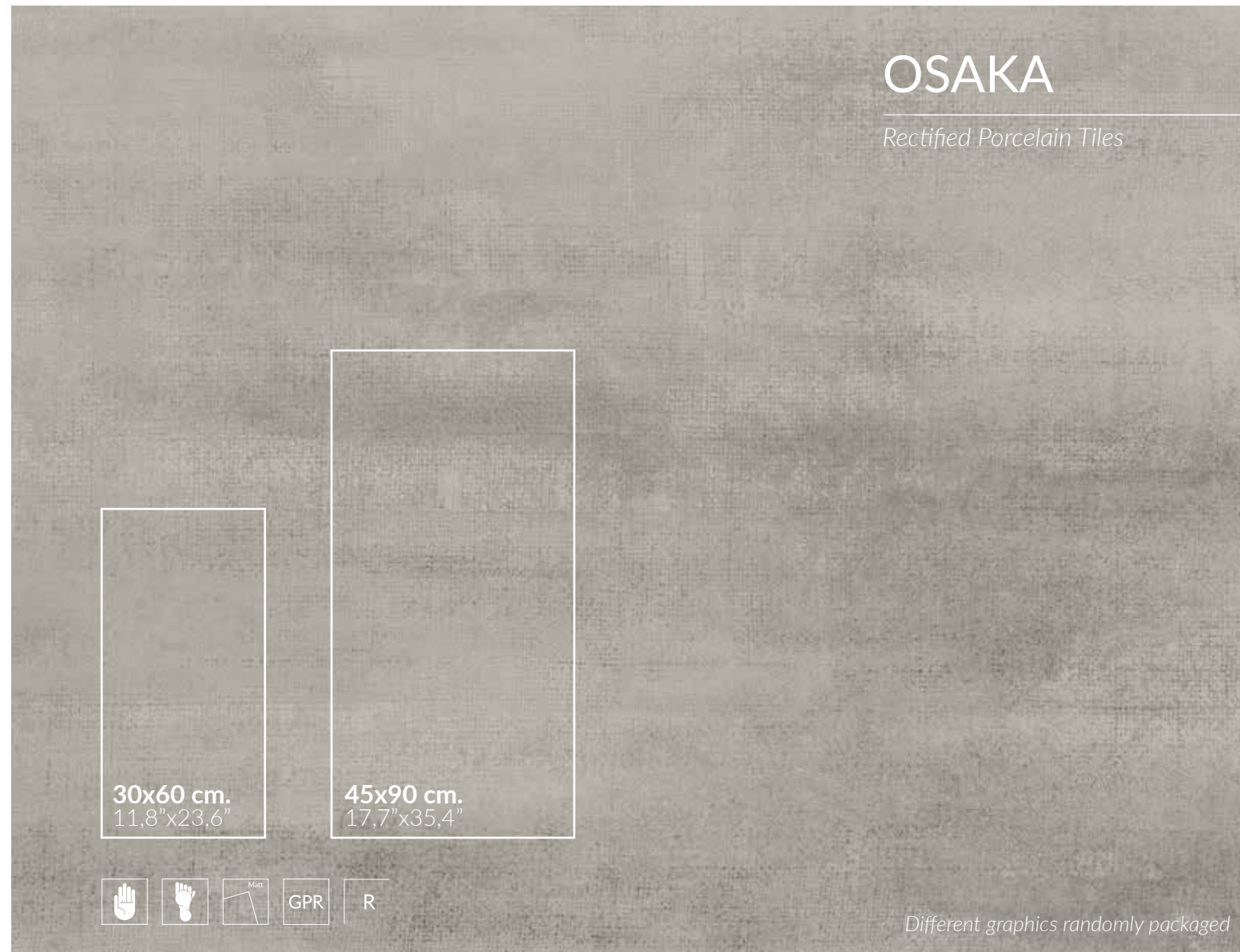


MARBLE\_WOOD  
& CONCRETE

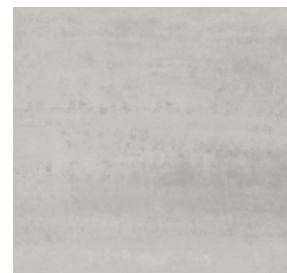
Osaka

**BESTILE**

*Time to Create*



Blanco



Gris

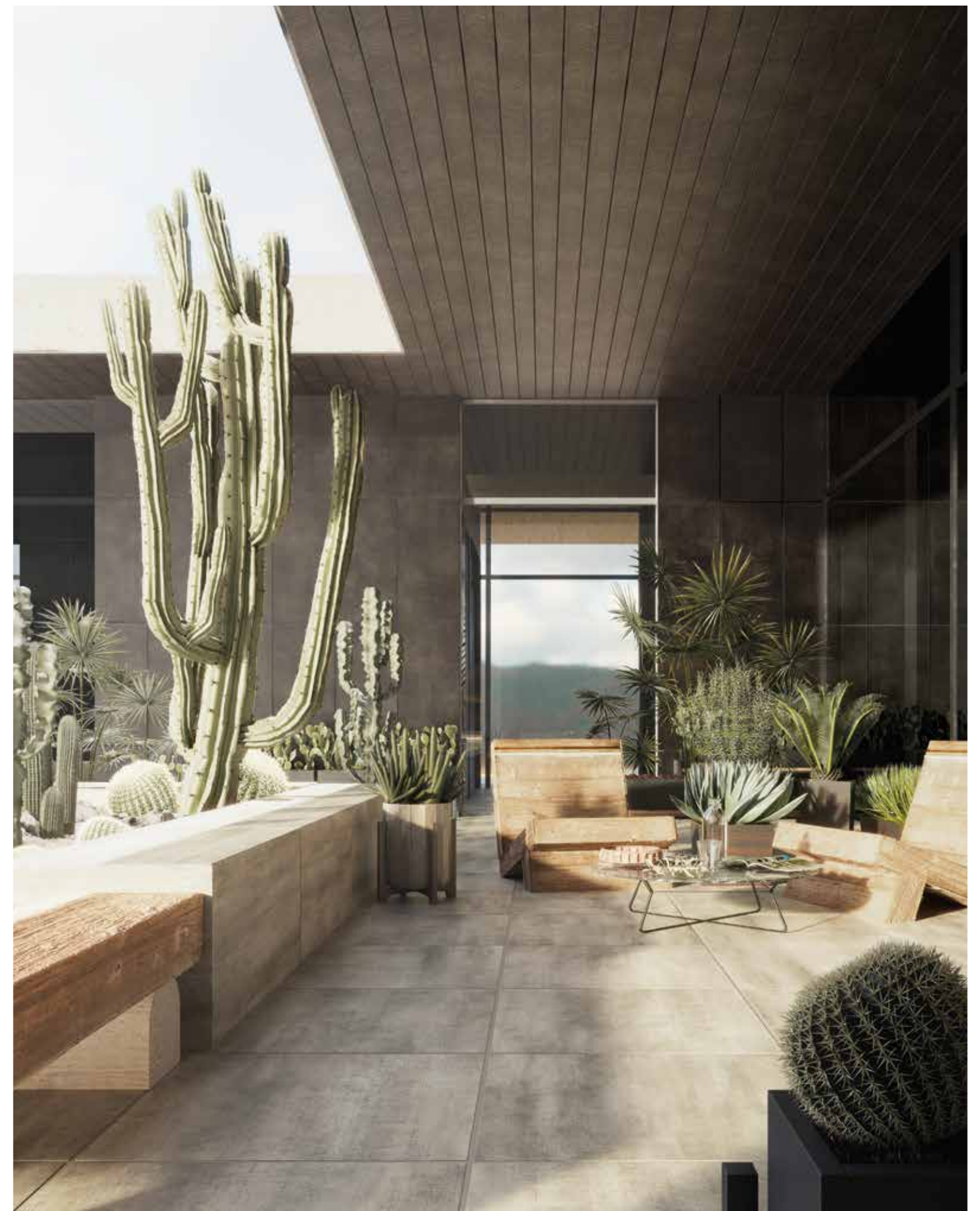


Grafito



Antracita

Available Sizes	Pz/bx	Sqm/bx	Kg/bx	Bx/Pallet	Sqm/Pallet	Kg/Pallet	Thickness
30x60 cm_11,8"x23,6"	8pz	1,44	26,00	48bx	69,12	1.265	RT
45x90 cm_17,7"x35,4"	3pz	1,22	30,38	32bx	39,04	863	RT



Osaka Antracita & Osaka Grafito 45x90cm\_17,7"x35,4"

# OSAKA

Rectified Porcelain Tiles



Osaka Antracita & Osaka Gris 45x90cm\_17,7"x35,4", & Nolita Negro 6,5x20cm\_2,6"x7,9"



Osaka Gris 45x90cm\_17,7"x35,4" & Borgo Crackle Graphite 6,5x20cm\_2,6"x7,9"

# BESTILE

Pda. Torreta S/N  
12110 - Alcora  
Castellón (ESPAÑA)  
+34 964 367 320



[www.bestile.es](http://www.bestile.es)